

Public Document Pack

MEETING	(SACRE) STANDING ADVISORY COUNCIL FOR RELIGIOUS EDUCATION
DATE	Monday, 8th October, 2012 4.00 pm
VENUE	CANTELL MATHS & COMPUTING COLLEGE - VIOLET ROAD, SOUTHAMPTON SO16 3GJ
ENQUIRIES	PAT WOOD 023 8083 2302 Email: pat.wood@southampton.gov.uk
MEMBERS	SEE ATTACHED LIST

A G E N D A

1. WELCOME, APOLOGIES AND CHANGES OF MEMBERSHIP

2. STATEMENT FROM THE CHAIR

3. DECLARATION OF INTERESTS

4. MINUTES OF THE LAST MEETING INCLUDING MATTERS ARISING

To approve and sign as a correct record the minutes of the meeting held on 11th June 2012, attached.

5. MEMBERSHIP OF SACRE

To update the Membership List with Members who have indicated, since the last meeting, that they are willing to stand for a further four years.

6. FEEDBACK ON EVENTS

7. NATIONAL SUBJECT REVIEW OF RELIGIOUS EDUCATION

To discuss the Religious Education Council of England and Wales' (REC) Subject Review of Religious Education, attached.

8. DISCUSSION ON FAITH SCHOOLS

To discuss different faith schools in Southampton.

9. EDUCATIONAL ATTAINMENT 2012

To receive a presentation by the Senior Inspector to Schools and discuss the educational attainment for 2012, attached.

Friday, 28 September 2012

HEAD OF LEGAL, HR AND DEMOCRATIC SERVICES

STANDING ADVISORY COUNCIL FOR RELIGIOUS EDUCATION

MEMBERSHIP

GROUP A

Christian Denominations*

(Religions and other bodies listed in the SACRE Constitution)*

The Roman Catholic Church	David Walford
The Baptists	Rev Andy Mills
The Religious Society of Friends (Quakers)	Vacancy
The Greek Orthodox Church	Gregory Hadjikyriacou
The Fellowship of Independent Evangelical Churches	Margaret Blake
The Methodist Church	Gail Ratcliffe
The United Reformed Church	Vacancy
The Assemblies of God	Peter Howard
The Salvation Army	Major Ruth Hill

Other Religions

Religions other than Christianity (as listed in the SACRE Constitution) – Baha'i, Buddhism, Judaism, Hinduism, Islam, Sikhism = 6

Baha'i	Elizabeth Jenkerson
Buddhist	David Vane (VICE-CHAIR)
Hindu	Priti Dave
Jewish	Ms Mag Kushner
Muslim	Anas Al-Korj
Sikh	Bharpoor Singh

GROUP B

(Four representatives of the Church of England)

The Church of England

Tony Blackshaw
Anne Steele-Arnett
Chris Pritchard
Ros Wigley

GROUP C

(Six teachers representing associations recognised by the Authority for the purposes of consultation and negotiation)

National Union of Teachers (NUT)	Jackie Meering
The National Association of Schoolmasters/ Union of Women Teachers (NASUWT)	Mr D Parrott
Voice	Mr R Palmer
The Association of Teachers and Lecturers (ATL)	Julian Bryant
Association of School and College Leaders (ASCL)	Ruth Evans
National Association of Headteachers (NAHT)	Ellen Humphries

GROUP D

(4+substitute) - Four representatives of the Southampton City Council, at least two of whom shall be elected members of the City Council)

Southampton City Council

Councillor Edward Daunt (CHAIR)

Councillor Satvir Kaur

Councillor Dr Darren Paffey

Councillor Brian Parnell

GROUP D SUBSTITUTE

Mrs. K. Martin

OTHERS (Non-voting)

CO-OPTED MEMBERS

South Hampshire Humanists

Ms. Chris Robinson

Primary School RE Teacher

Anna Adams

Representative of Teachers' Subject
Network/Advanced Skills
Teacher (RE)

Sian Roberts

Southampton City Mission

Chris Davis

OBSERVER

Freemantle C of E Community Academy

Natasha Bye-Brooks

This page is intentionally left blank

Agenda Item 4

(SACRE) STANDING ADVISORY COUNCIL FOR RELIGIOUS EDUCATION
MINUTES OF THE MEETING HELD ON 11 JUNE 2012

Present:

Group A –

Christian Denominations

David Walford, Margaret Blake and Peter Howard

Other religions

David Vane and Priti Dave

Group B – Church of England

Anne Steele-Arnett (Items 7-10)

Group C – Teachers

Jackie Meering and Ellen Humphries

Group D – Members of the Council

Councillors Daunt and Parnell

Others (Non-Voting)

Sian Roberts (Items 4-10) and Chris Davis

Also in attendance

Taz Curtis, Children's Services and Learning

1. **ELECTION OF CHAIR AND VICE CHAIR**

RESOLVED that Councillor Daunt be appointed as Chair for the 2012/13 Municipal Year and that David Vane, Buddhist (Group A member) be appointed Vice-Chair for the 2012/13 Municipal Year.

2. **WELCOME AND APOLOGIES**

The Chair welcomed members to the meeting and thanked them for coming.

Apologies were received from:-

Group A	Andy Mills
Group A	Gail Ratcliffe
Group B	Ros Wigley
Group B	Chris Pritchard
Group C	David Parrott
Group D	Councillor Paffey
Group D	Kate Martin
Co-Opted	Chris Robinson
Observer	Natasha Bye-Brooks

3. **MEMBERSHIP**

The Chair reported that Jeff Lynn had left the Southampton area and that Elizabeth Jenkerson had agreed to be the Baha'i representative in Group A. This was agreed by the meeting. The Chair stated that he would write to thank Jeff Lynn.

The Chair reported that he was seeking new Members for some groups as the current Member did not attend meetings.

The Chair further reported that Membership of SACRE was for four years and it had come to light that several members' term of office had officially expired. All members at the meeting agreed to serve another four year term and the Clerk was asked to write to those expired members not present to make the same inquiry.

4. **MINUTES OF THE LAST MEETING INCLUDING MATTERS ARISING**

RESOLVED that the minutes of the meeting held on 5th March 2012 be approved and signed as a correct record. (Copy of the Minutes circulated with the Agenda and appended to the signed Minutes).

Matters Arising

The Chair commented on the issue raised regarding the short length of SACRE meetings and asked that Members contact him before future meetings with any further ideas for discussion.

Examination results were discussed as a possible topic for future meetings and it was agreed to discuss this at the next meeting when the current academic year's results would be known. The Chair stated that he would bring exam results from the last four years in order to show a trend.

Members considered it important to monitor RE results in Primary Schools and it was agreed that it would be useful to encourage Members to go into Primary Schools to see how RE is taught. The Chair agreed to contact Margaret Elton, clerk of the Global School Governors meeting, to enquire if RE could be promoted at their meetings.

Jackie Meering agreed to enquire about RE teaching on the east side of the city and Councillor Daunt agreed to enquire about the west side.

Sian Roberts stated that there was an RE Secondary Network Panel meeting scheduled for 19th June which SACRE Members would be welcome to attend and that she would forward details to the Clerk for onward transmission to Members.

It was agreed that it would be useful if Councillor Bogle, Cabinet Member for Children's Services, attended SACRE meetings so that she would be able to raise SACRE's point of view at Overview and Scrutiny Management meetings which incorporated various matters regarding children and young people.

5. **FEEDBACK ON EVENTS**

David Vane reported that the recent Peace Walk had received a good attendance and that the Gandhi, King, Ikeda exhibition had also been very well received. He stated that the next Peace Walk was scheduled for 16th June.

Councillor Parnell reported that £25,000 had been given to the Street Pastor Initiative which had been passed to a new sub-group for Schools Pastors. Cantell Maths and Computing College and Upper Shirley High Schools were two schools involved with Schools Pastors, which had received enthusiastic and positive feedback.

Margaret Blake reported that the Mark Drama had been very well attended with over 1000 people.

6. **COLLECTIVE WORSHIP IN SCHOOLS**

Members acknowledged that City Mission regularly went into schools and that collective worship did take place in many ways in schools. It was agreed that it would be useful for Members to see what happens at the City Mission events as these were being organised by non-teachers. Chris Davis stated that he would circulate the dates for the next half term when City Mission would be visiting schools. Several Members had expressed an interest in visiting schools to see what they do and it was considered important to stress to the school that it was only an information gathering exercise.

Jackie Meering stated that School Governors would know what Collective Worship arrangements were in place in their schools and all Governors were asked to enquire about what their school does and bring the information to the next SACRE meeting. The Clerk was asked to send an email to request this information to all Members.

The paper attached to the agenda entitled "Collective Worship in Schools" was considered to be a useful document and it was agreed that it was important to find the source document so that an updated version could possibly be sent out via the Schools Newsletter which would be useful for Newly Qualified Teachers. The Chair agreed to enquire of NASACRE if they had the whole document and Jackie Meering agreed to contact Judith Lownes. It was agreed to bring this matter to a future meeting for approval. Once an updated version had been approved at a SACRE meeting, it could be sent out to all schools.

Chris Davis explained that there was a group called "Your School – Southampton" which had a co-ordinator who knew what was happening in Collective Worship in schools. This group would wish to give training and it was considered important that SACRE and the group liaise.

7. **FAITH SCHOOLS**

David Vane stated that a discussion had taken place at the Southampton Council of Faiths (SCOF) about having a mixed school for Muslim and non-Muslim children which had raised some concerns. It was agreed that the Chair would ask Anas Al-Korj to make a presentation at the next meeting about the Muslim school, Fitrah SIPS. Members had been offered an invitation to visit the school, with prior notice.

Members agreed that it was important to define the meaning and intention of a faith school.

8. **FUTURE AGENDA ITEMS**

The meeting agreed that there were enough items for the next meeting but Members were encouraged to contact the Chair with ideas for the future.

9. **DATES OF FUTURE MEETINGS**

The following dates were agreed:

Monday 8th October 2012, 4.00pm

Monday 4th March 2013, 4.00pm

Monday 10th June 2013, 4.00pm

Members stated that they preferred a venue with plenty of parking and it was agreed that Cantell Maths and Computing College was a convenient venue. The Clerk was asked to book the College for the next three meetings.

10. **ANY OTHER BUSINESS**

Sian Roberts explained that she would be on sabbatical in the autumn for six months so would not be at SACRE meetings during that time.



RE Subject Review: Phase One (Preliminary)

June

Agree criteria for selection + proposed panel
Project Manager (PM) & Expert Panel Chair (EPC) agree key documents
(Background info + terms of ref + documentation list + expert witnesses + formats for response)



Steering Group meeting (10th July)

Notify Expert Panel (EP) members (if ratified)
Send out key documents to EP members
Encourage general email communication between EP members



EP meeting 1 (10th August, London)

Hear from expert witnesses
Formulate initial ideas & hunches



10th August – 19th September

EP read key documents & record reactions
Response forms sent out to expert witnesses
Receive submissions + record
General email communication between EP group members (e.g. exploring ideas)



EP meeting 2 (19th September, Birmingham)

Hear from further expert witnesses
Agree format & key ideas of report
Progress report to Steering Group on 26th September
Circulate draft report to Steering Group 24th October



Meeting with Steering Group (31st October)

Presentation of first draft report
Responses & discussion
Small matters addressed in second draft
Second draft circulated to Reference Group



Meeting with Reference Group (7 November)

Presentation of second draft report
Amended approved third draft published on REC website for wider consultation by proforma & blog



Report considered by REC Board (6 December)
(Final approval to be given by Steering Group in late December/ early January)

This page is intentionally left blank

Phase 1

Appoint expert panel members and agree terms of reference

Produce evidence bundles and invite expert witnesses to speak to panel

Panel produce report for Steering Group with key findings and recommendations for Phase 2

Consultation and approval of report by Reference & Steering Groups

Phase 4

Evaluation report submitted to Steering Group & REC board

Final budget submitted for approval and review signed off

Phase 2

Constitute working groups and agree terms of reference; appoint a lead for each group and identify timescale, outcomes & budget/resources available

Set up tasks modelled on NC review; create proformas for reporting

Working groups produce interim reports for Steering Group and final reports for Reference & Steering Groups for approval

OVERVIEW: THE RE SUBJECT REVIEW

Phase 3

Bring together working group leads + expert panel chair to compile final composite report from Phases 1 & 2 and to plan and deliver dissemination of findings

Identify opportunities for follow up work by appropriate parties and potential sources of funding

This page is intentionally left blank

Educational attainment 2012

Varina Emblen: Senior Inspector
Edd Shackleton: School's Data Analyst

September 2012



Southampton Achieves

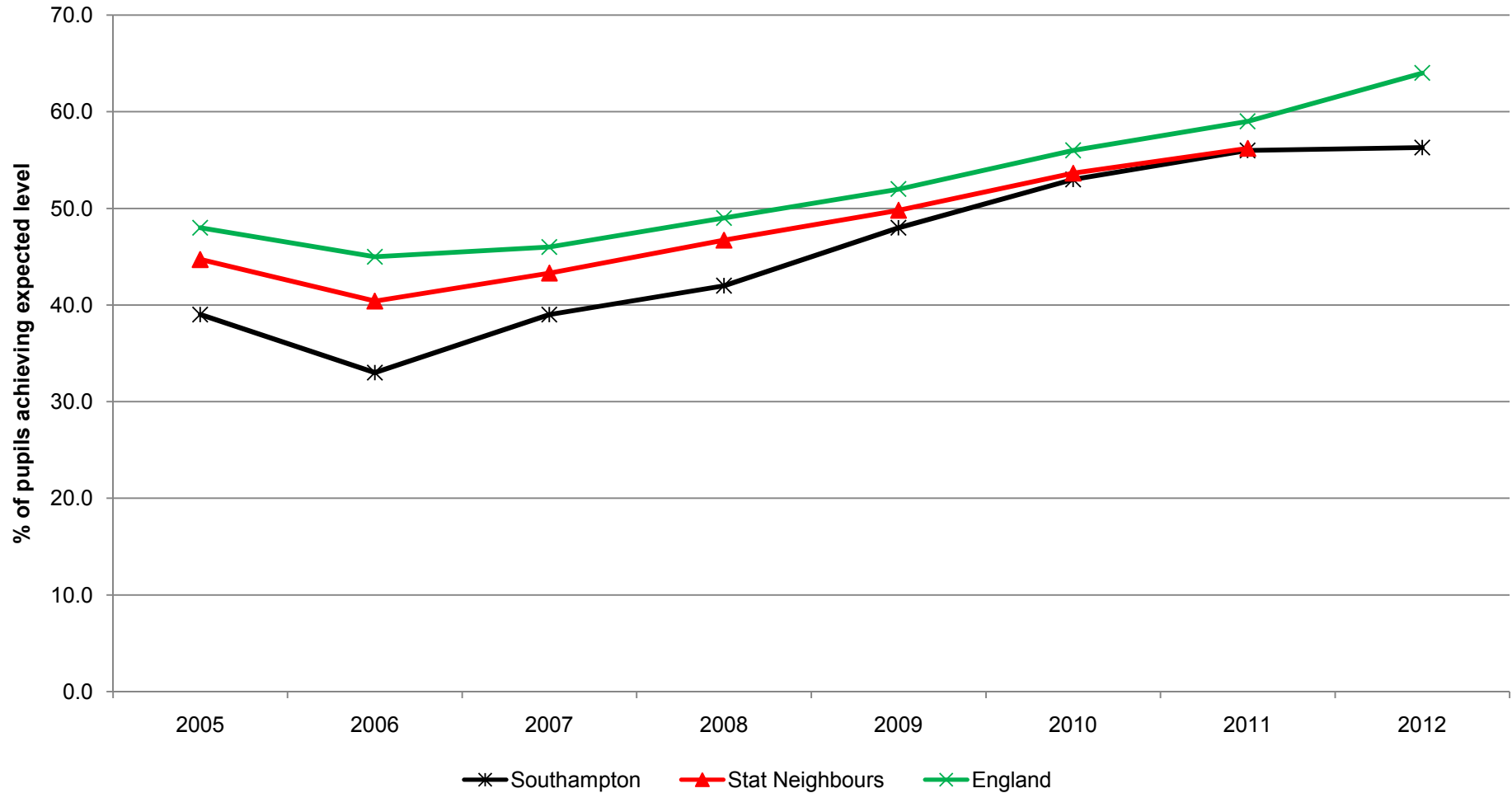
- Key Stage 1 - above or in line with the National average since 2010.
- Key Stage 2 - 13% improvement since 2009 and the second fastest improvement nationally out of 152 Local Authorities in 2011.
- Attainment for pupils in our most deprived areas well above the floor standard at Key Stage 2 at 72%.

Southampton Achieves

- Key Stage 4 – 11% increase since 2009
- Key Stage 5 – closing the gap with National from 118.3 average points to 21.7
- Compared to similar Local Authorities, Southampton achieves

Early Year Foundation Stage (EYFS)

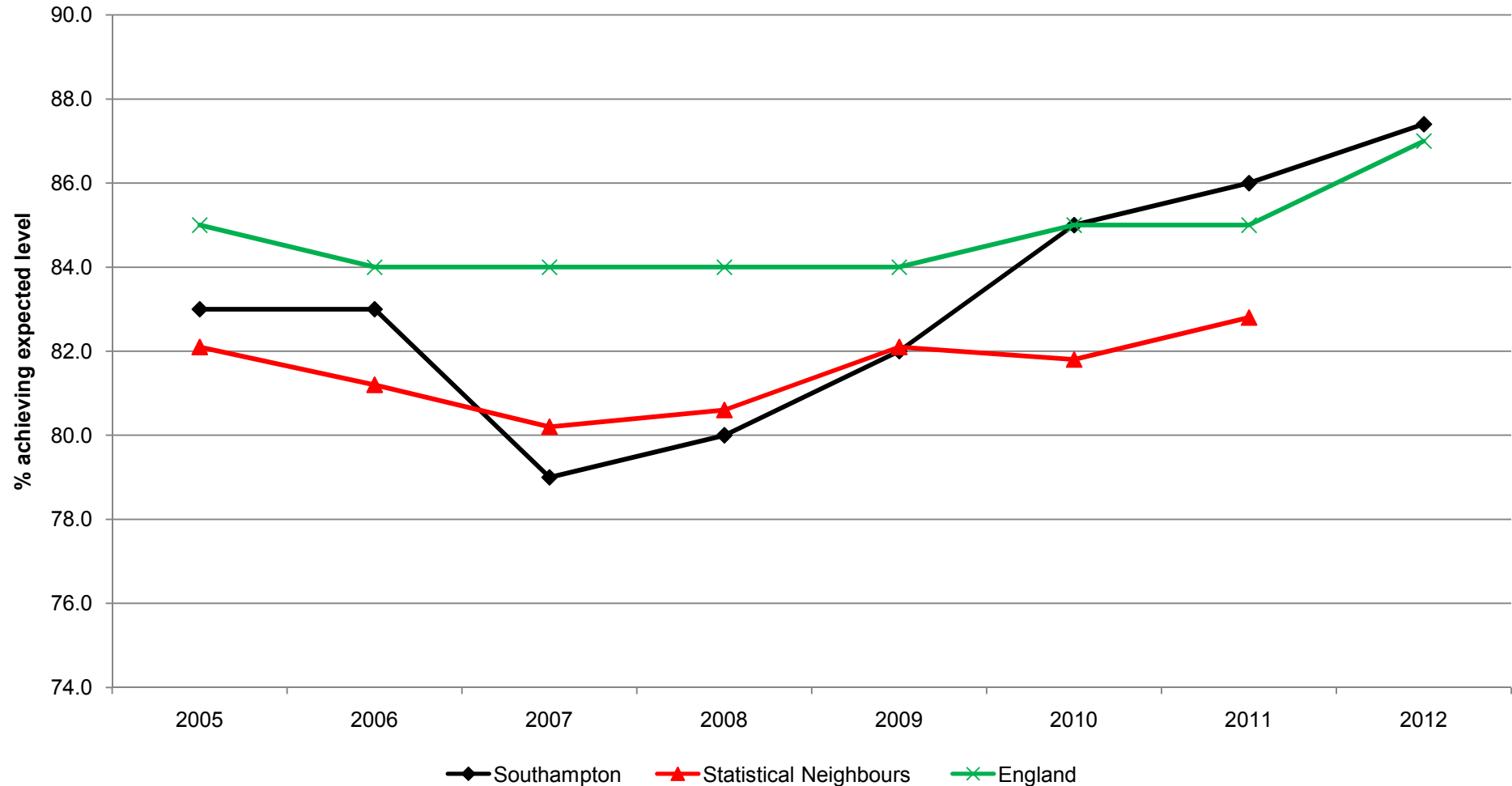
A good level of development – 78 points across the foundation stage and 6+ in PSE & CLL



A national improvement of 5% presents further challenge

Key Stage 1 Reading

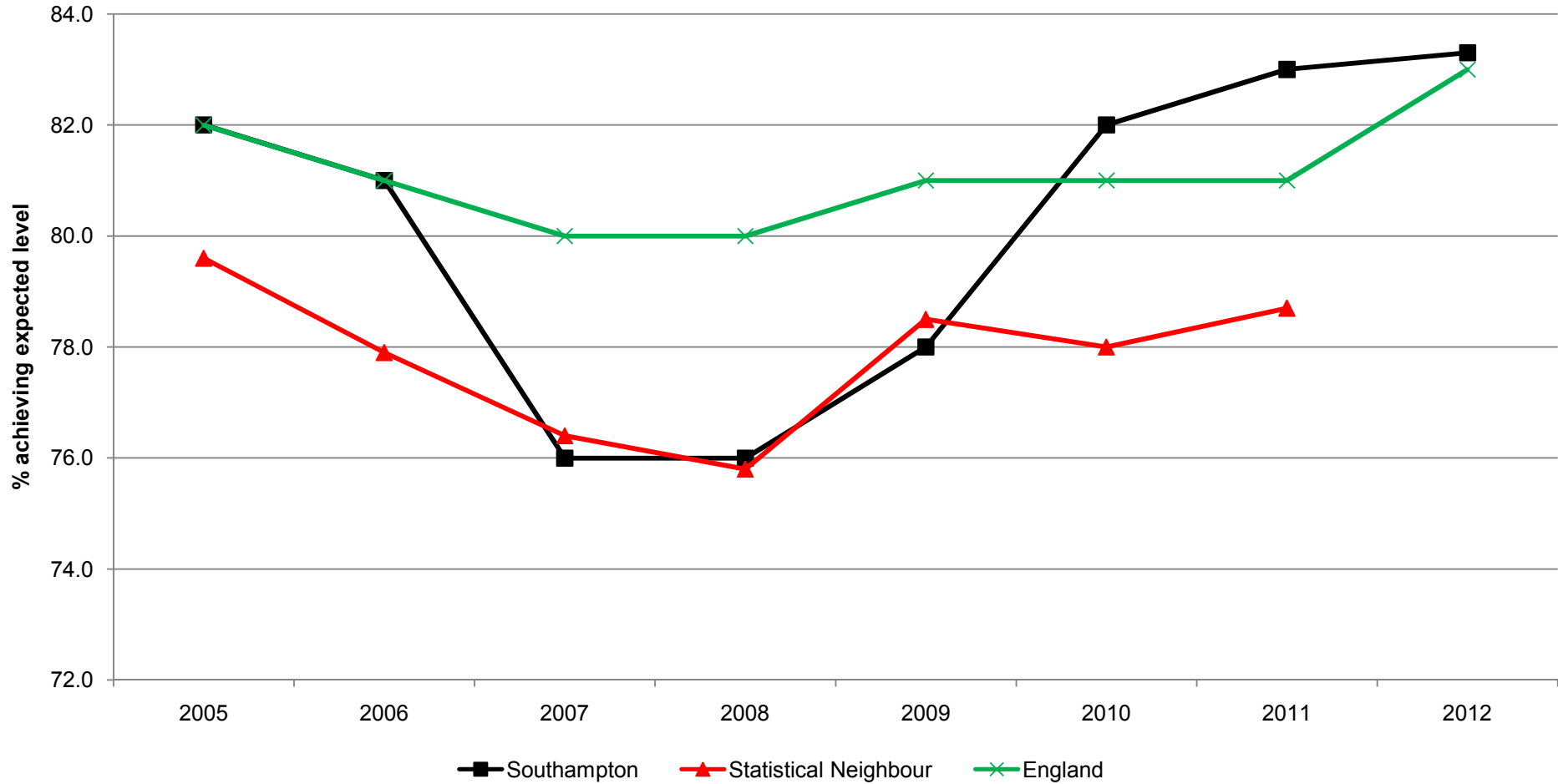
% of pupils achieving Key Stage 1 Level 2+ Reading



Reading outcomes are now broadly in line with national

Key Stage 1 Writing

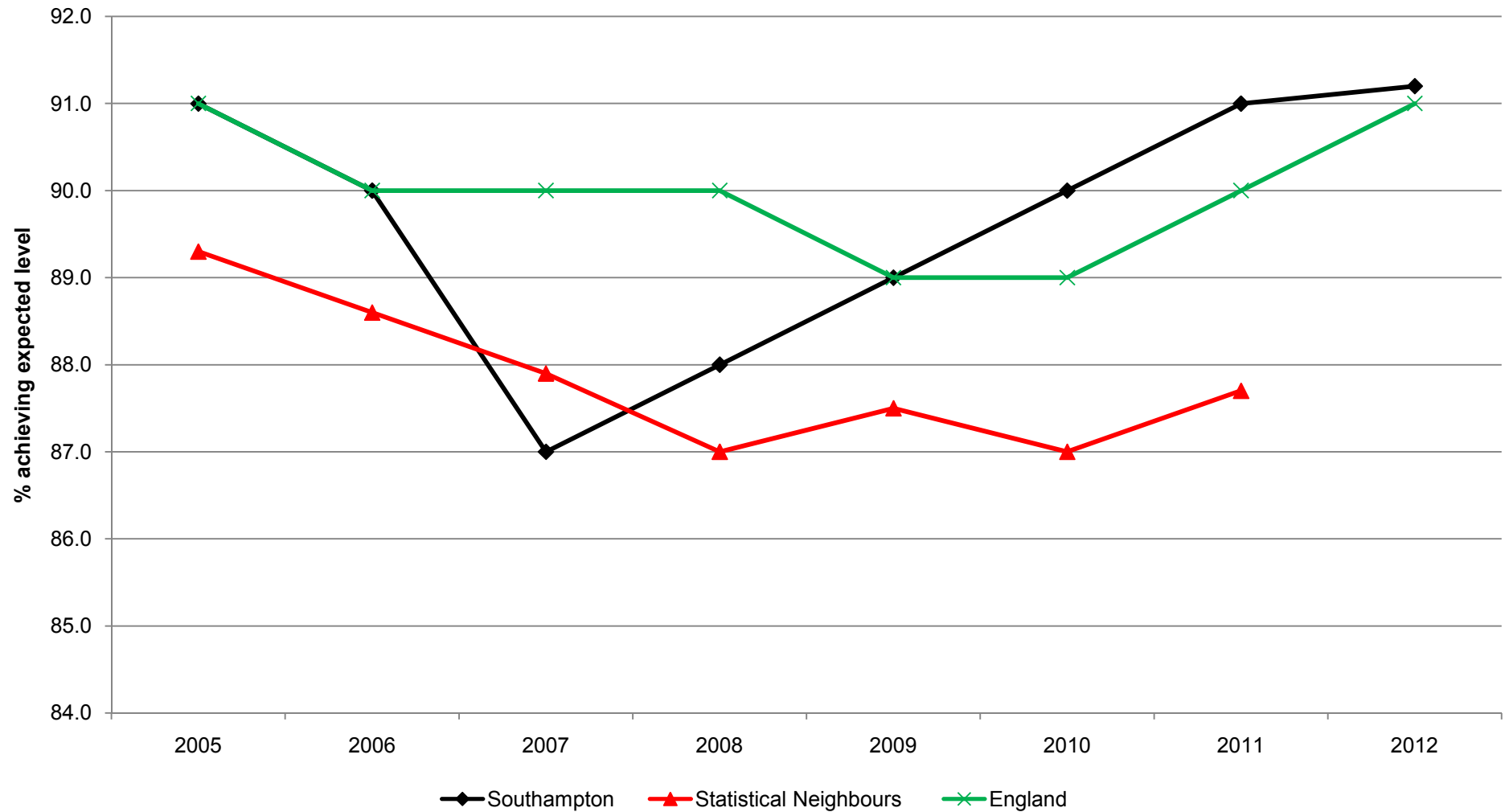
% of pupils achieving Key Stage 1 Level 2+ Writing



Writing is also now broadly in line with national

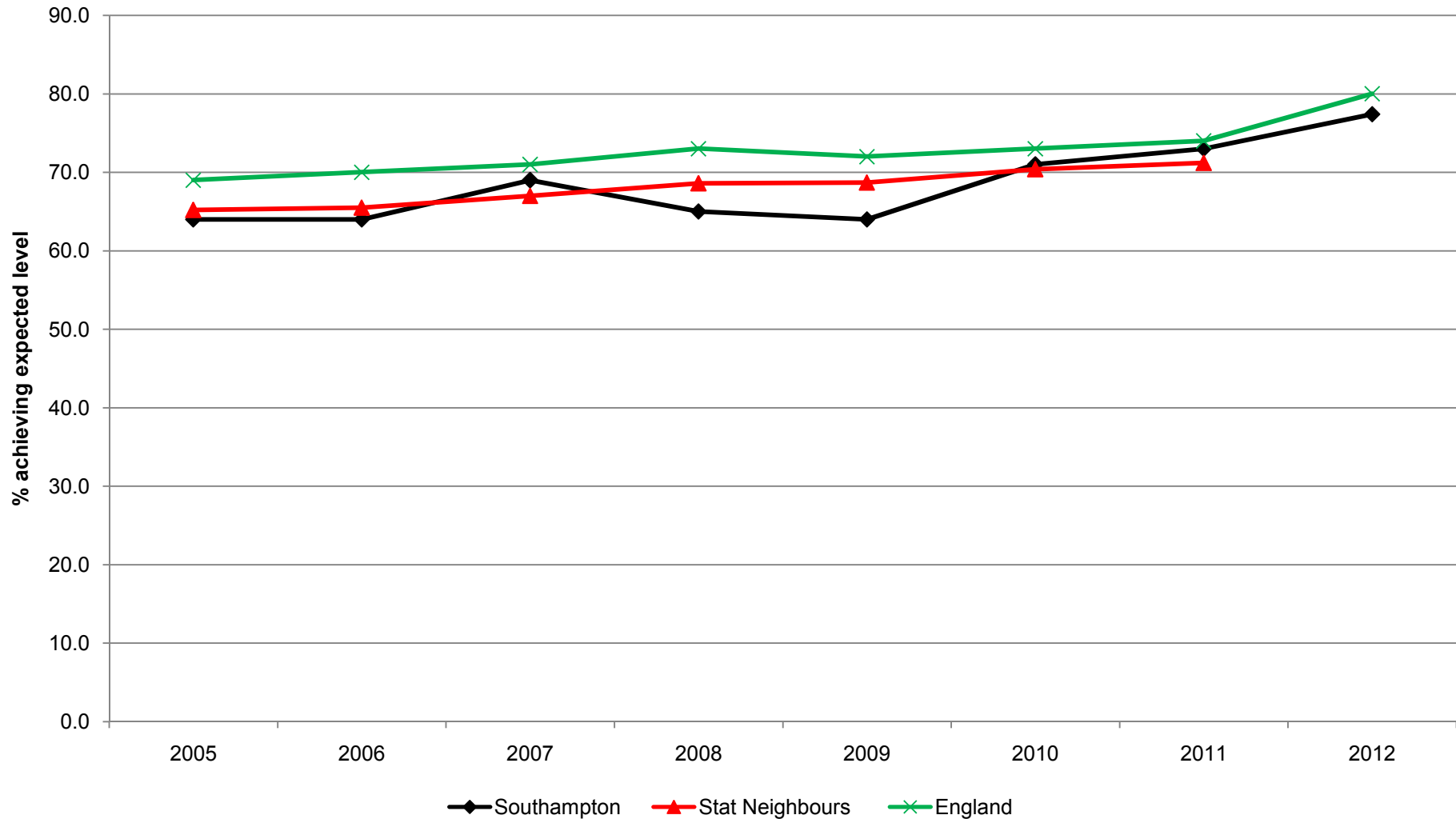
Key Stage 1 Maths

% of pupils achieving Key Stage 1 Level 2+ Maths



Key Stage 2

% of pupils achieving Key Stage 2 Level 4+ English and Maths



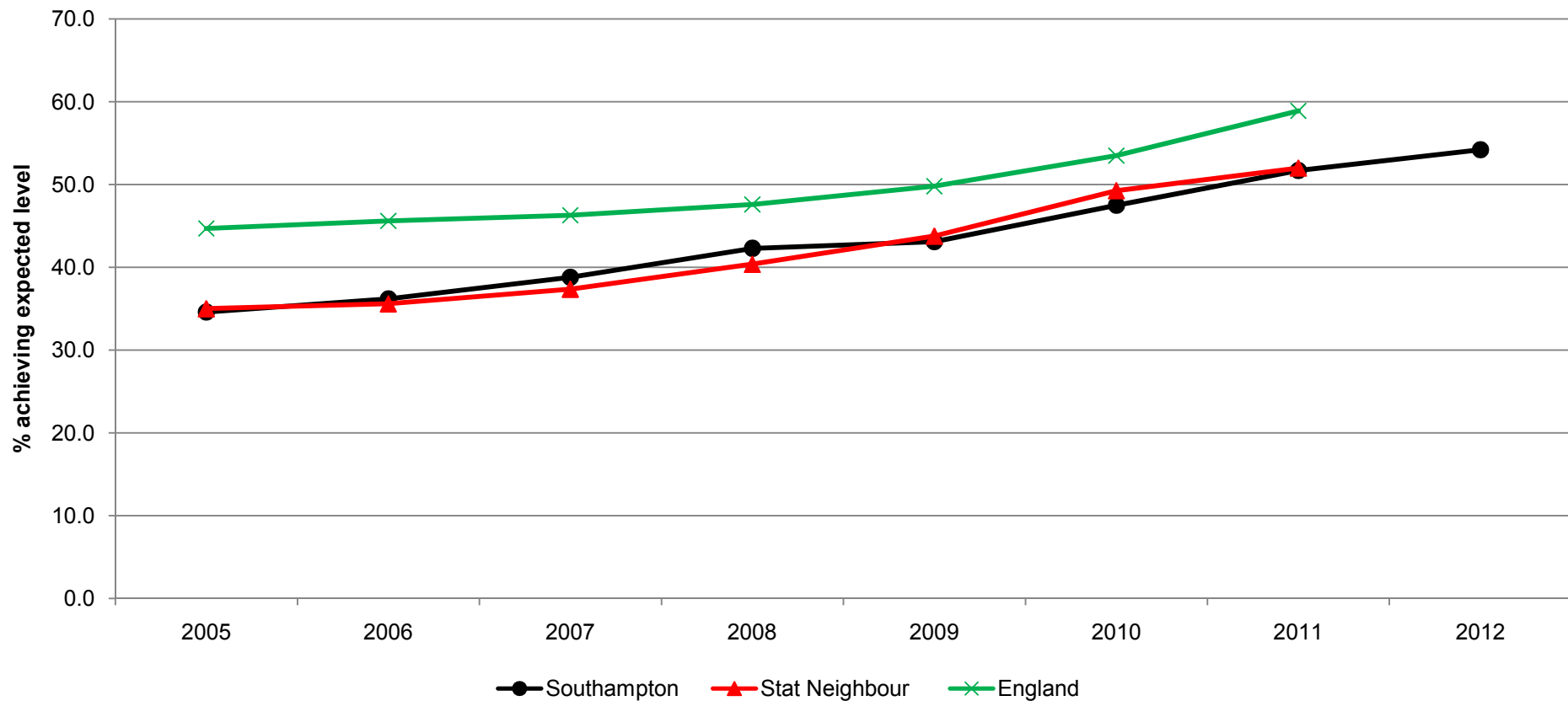
A provisional improvement nationally of 6%.

How was this improvement achieved?

- Through a relentless focus on improving the quality of teaching and leadership
- Recognising that context *is* the context and not a barrier
- Comparing ourselves with contextually similar authorities, seeking out and learning from good practice
- Learning from the best within our schools and used to support schools to improve through school to school partnerships

Key Stage 4

% of pupils achieving 5 or more A*-C grades including English and Maths GCSE



- **Between 2009 and 2012 Southampton achieved a 11.1% increase.**
- **Provisional data indicates a 2.5% to 54.2 in 2012.**
- **Currently National data is not available for comparison.**

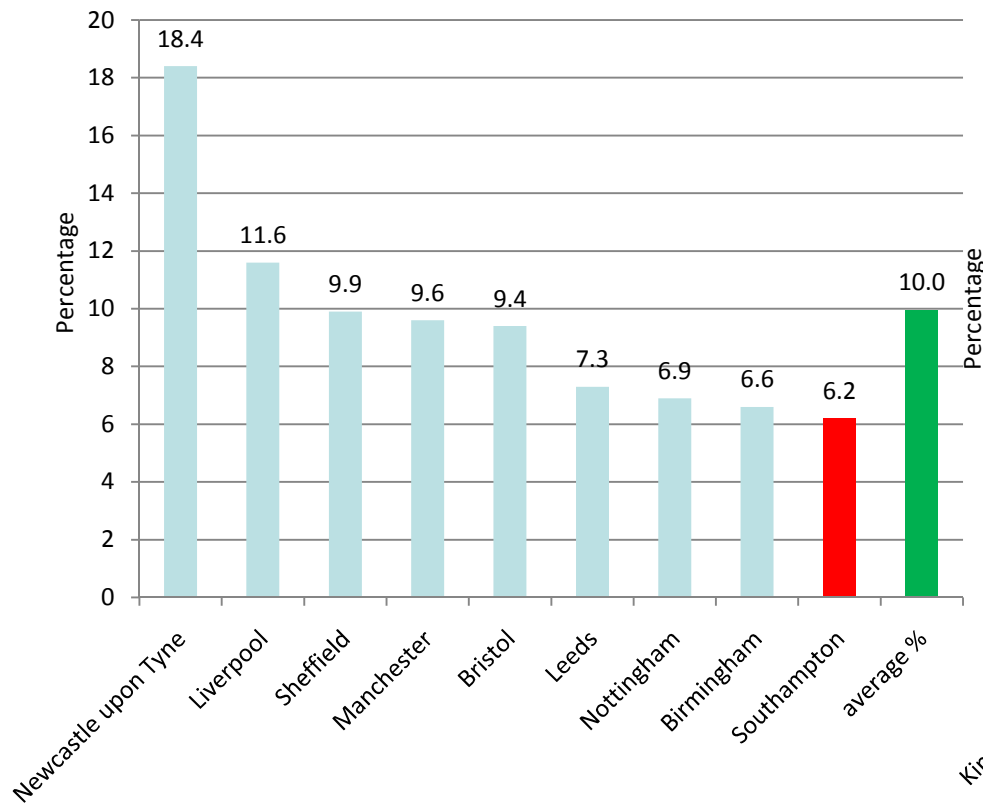
Key Stage 5

- Post 16 - 97% of Southampton entrants achieved a pass at College or Sixth Form.
- 98% of A-level entries achieved a grade A* to E which is in line with national
- 35% achieved an A*-B grade. Nationally a pass rate of 52.6% was achieved.
- 3% of Southampton entries achieved an A-Level A* grade in 2012.

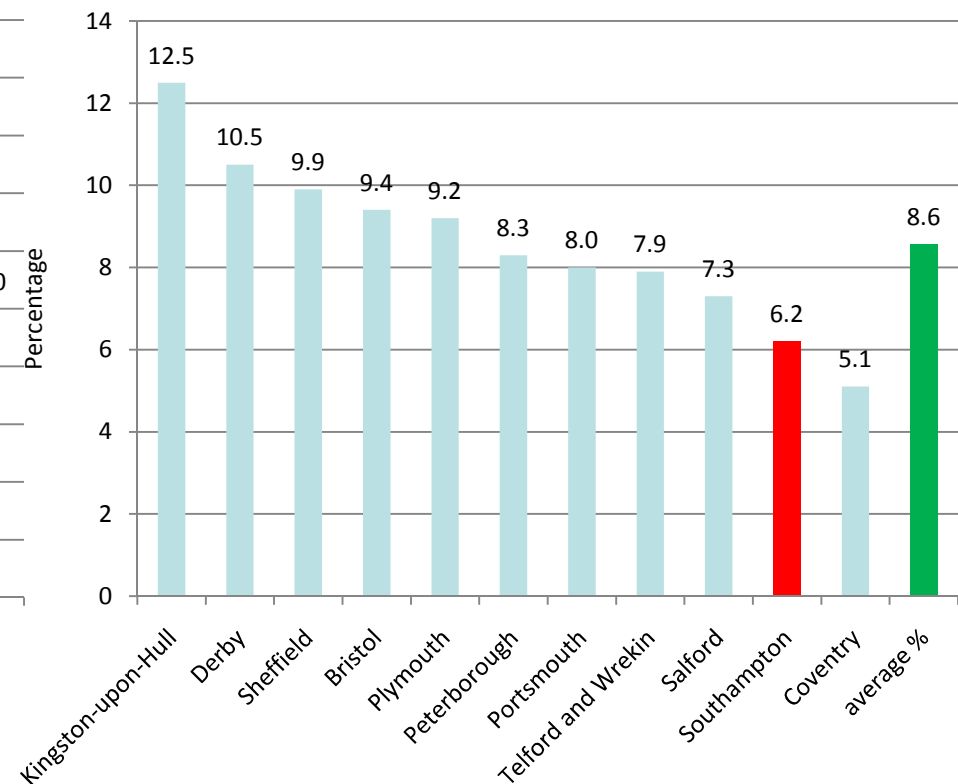
Not in Employment, Education or Training (NEET) 2008-2012

- Between 2009 and 2012 Southampton NEETs have reduced to less than half, from 12.6% to 6.2%.
- Southampton NEETs in July 2012 are now below the National average of 6.3%.
- Partnership between City College, Wheatsheaf Trust, Southampton City Council, Princes Trust and City Limits.

NEET Core Cities - July 2012



NEET Statistical Neighbours - July 2012



Future Challenges

- A changing estate of educational provision
- Attendance
- Shrinking local resources
- Every child or young person's entitlement to a 'Good' education

Narrowing the Gap: Southampton vs. National

Key Stage	Indicator	2011 Southampton	2011 National	Southampton - National	2012 Southampton	2012 National	Southampton - National	Change in Gap to National 2011-2012
Early Years Foundation Stage	A good level of development - 6+ in PSE & CLL with 78 points total	56	59	-3	57	64	-7	-4
Key Stage 1	Level 2+ Reading	86	85	1	87	87	0	-1
	Level 2+ Writing	83	81	2	83	83	0	-2
	Level 2+ Maths	91	90	1	91	91	0	-1
Key Stage 2	Level 4+ English & Maths	73	74	-1	77.3	79.6	-2.3	-1.3
Key Stage 4	5+ A*-C inc English & Maths	51.7	58.2	-6.5	54.2		Provisional data suggests a challenge	

2012 Targets

Key Stage	Indicator	2012 Southampton	2012 Target	2012 National	Additional pupils required to meet 2012 Target	Additional pupils required to meet 2012 National
Early Years Foundation Stage	A good level of development - 6+ in PSE & CLL with 78 points total	57	67	64	269 pupils (10%)	188 pupils (7%)
Key Stage 1	Level 2+ Reading	87	91	87	96 pupils (4%)	0 pupils (0%)
	Level 2+ Writing	83	88	83	120 pupils (5%)	0 pupils (0%)
	Level 2+ Maths	91	94	91	72 pupils (3%)	0 pupils (0%)
Key Stage 2	Level 4+ English & Maths	77.3	82	79.6	96 pupils (4.7%)	47 pupils (2.3%)
Key Stage 4	5+ A*-C inc English & Maths	54.2	62.5		160 pupils (8.3%)	The level of challenge to reach National is likely to be in excess of the Southampton Target

Education in Southampton – closing thoughts

- A trend of improvement but gaps widening
- Collaborations and partnerships effective but they need social capital
- Freedoms and autonomy but accountability needs to be assured

- A cultural shift in recent years, but danger that energies could be diverted
- Potential challenges in improving outcomes and opportunities – autonomy still requires checks and balances
- Collective clarity on how our joint actions lead to better outcomes and life prospects for learners of all ages, capabilities and starting points.

Questions and Discussion

